

CORRUGATED METAL TURBO SHEAR™ Drill Attachment

**Make your Drill a
Metal Cutting Shear that easily cuts
difficult corrugated panel profiles!**

Easily navigate cross-cuts, make fast trim cuts, even cut square outlet holes in corrugated metal roofing and non-standing-seam metal panels.

Fits a Drill you already own

Quickly insert the TSCM into the drill chuck of your cordless or corded drill. Our telescoping drill clamp adjusts to any drill housing.

Durable Scissor Action Blades

Hardened carbon steel blades with scissor action combined with lateral blade adjustment, offers optimum uninterrupted service life. Blades are easily replaceable.

Malco



**LIFETIME
SOLUTIONS**

1 (868) 223-ROOF (7663)
www.lifetimesolutionstt.com
Local Supplier



TSCM



CORRUGATED METAL TURBO SHEAR™



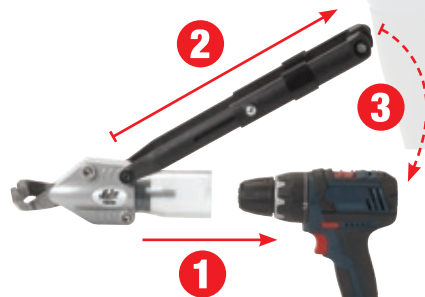
TSCM Drill Attachment



Blades are offset at a steep 75°, to ensure drill clears roofing panel when cutting rising angles.



Lateral blade adjustment ensures optimum cutting performance for the life of blades. Blades are also easily replaceable on the job.



Easy to Use!

Telescoping drill clamp adjusts to fit both length and width of motor housing including smaller bodied lithium-ion battery powered units. **(Drill not included.)**



Maneuverability, control and speed you need for efficient cutting:

This versatile and portable TurboShear fits a drill you already own to make easy cross cuts, fast lengthwise cuts, even circular and square outlets cuts in large or small pattern corrugated metal roofing and most trapezoidal (box) pattern metal roofing panels.



Corrugated Patterns



Trapezoidal (Box) Patterns



Elongated blades with compact jaws create a steep 75-degree offset so that the drill is held at a nearly vertical approach when starting a cut. As these offset blades follow the rising angle of a corrugated or trapezoidal profile, the drill handle or battery pack has clearance to naturally tip downward and still clear the roofing panel surface.

Fits a cordless or corded drill you already own:

The TurboShear quickly inserts into the chuck of most standard cordless or corded drills. A sleek, lightweight aluminum-cast shear head and compact molded polymer drill clamp allow maximum portability and ease to go wherever the work is. The telescoping drill clamp adjusts to fit both length and width of popular drill sizes including smaller motor housings of lithium-ion battery powered units. Not for use with impact drivers.

Long service life and replaceable blades:

Heavy-duty gearing and hardened carbon steel blades combine to offer long service life in 30 to 24-gauge (0.31 – 0.61 mm) metal roofing panel. A lateral blade adjustment capability ensures that optimum cutting performance and maneuverability can be maintained for the life of the blades. Replacement blades are easily installed on the job.

Specifications

TurboShear™ Corrugated Metal Cutting Drill Attachment

Catalog Number	Description	Drill Requirements	Mild Steel Capacity ga. (mm)	Weight lbs. (kg)
TSCM	Corrugated Metal TurboShear	Min. 14.4 Volt 3/8 in. (9.53 mm) Cordless or Corded Drill	30-24 (0.31-0.61)	2.16 (0.98)
TSCMRB	TSCM Replacement Blades	—	—	—
TSDC	TurboShear Drill Clamp	—	—	—



1 (866) 223-ROOF (7663)
www.lifetimesolutionstt.com

Local Supplier

Malco Products, Inc. | Annandale, Minnesota, U.S.A. | www.malcotools.com | ©2013
U.S. 320-274-7387 - 800-328-3530 | Canada: 320-274-2376 - 800-219-1085 | International: 01-320-274-2376
Contact our European Sales Leader Stefano Mariani | Mobile number: 0039 328 7305330 | Email: sem@malcotools.com

SL15595B